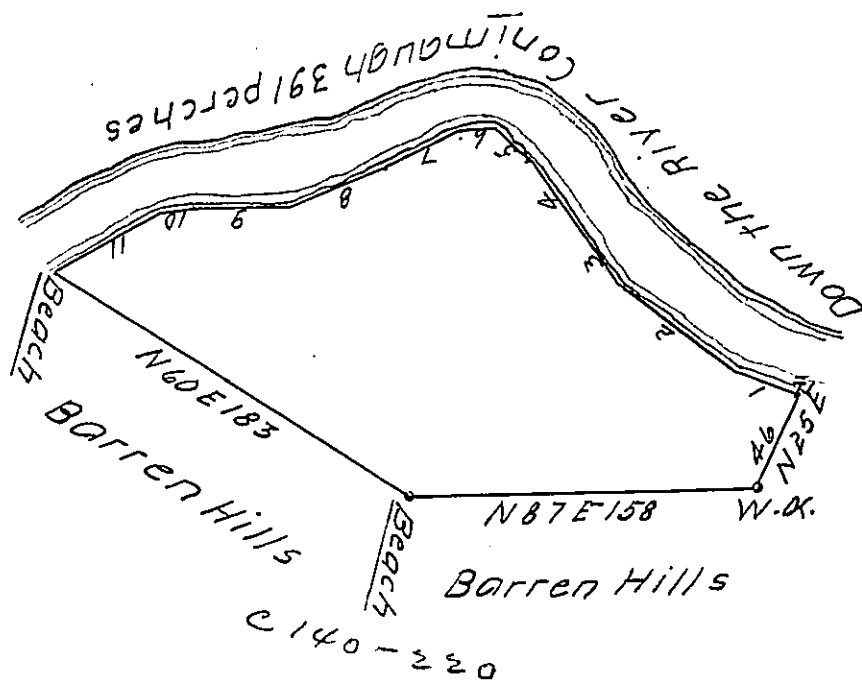


Tot. Distance 391.		N. of Courses	Courses Down the Conimough	Distance
29	N 71 W	1		29
60	N 60 W	1		60
36	N 35 W	1		36
38	N 41 W	1		38
20	N 52 W	1		20
10	N 85 W	1		10
41	N 65 W	1		41
45	N 71 W	1		45
43	N 86 W	1		43
18	N 72 W	1		18
84	N 61 W	11		84
Tot. Distance 391.				



In pursuance of an order No. 550, Dated April the 3<sup>d</sup> 1769 Surveyd for John Cummins the above Described Tract of Land, called the Ranger, Containing One Hundred & Sixty Acres & 150 perches, with an allowance proportioned to 6 Pcent, Situate in Bedford County, on the South Side of Conimough & West of John Hinkson - Surveyed May the 15<sup>th</sup> 1770 -

P

Robert McCrea

D.S.

To John Lukens Esq<sup>r</sup>.

S. Genl.

IN TESTIMONY that the above is a copy of the original remaining on file in the Department of Internal Affairs of Pennsylvania, made conformably to an Act of Assembly approved the 16th day of February, 1833, I have hereunto set my Hand and caused the Seal of said Department to be affixed at Harrisburg, this seventeenth day of April 1912.

*Henry Howell*  
Secretary of Internal Affairs.